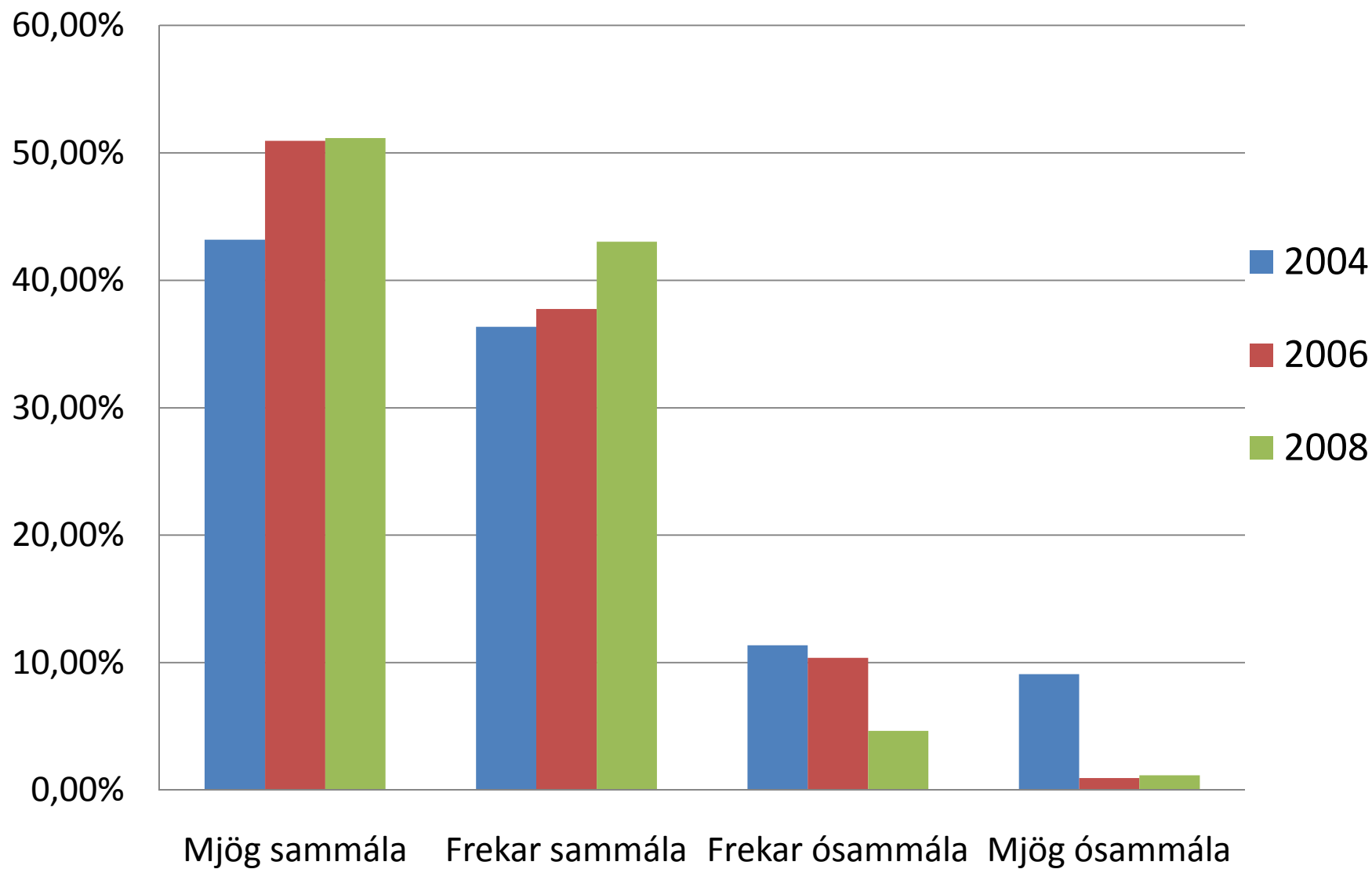
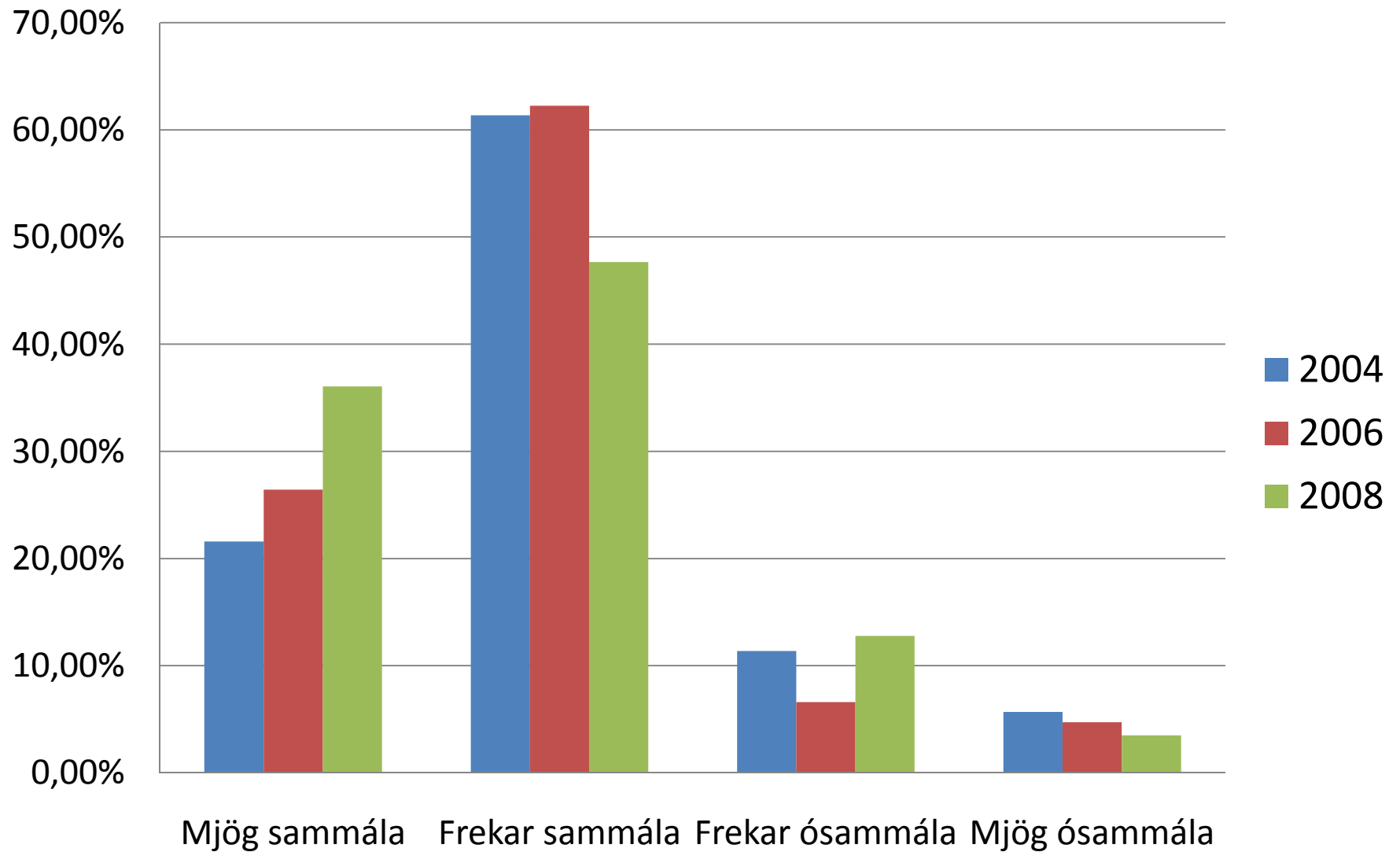


Mér líður vel í skólanum

7. – 10. b.

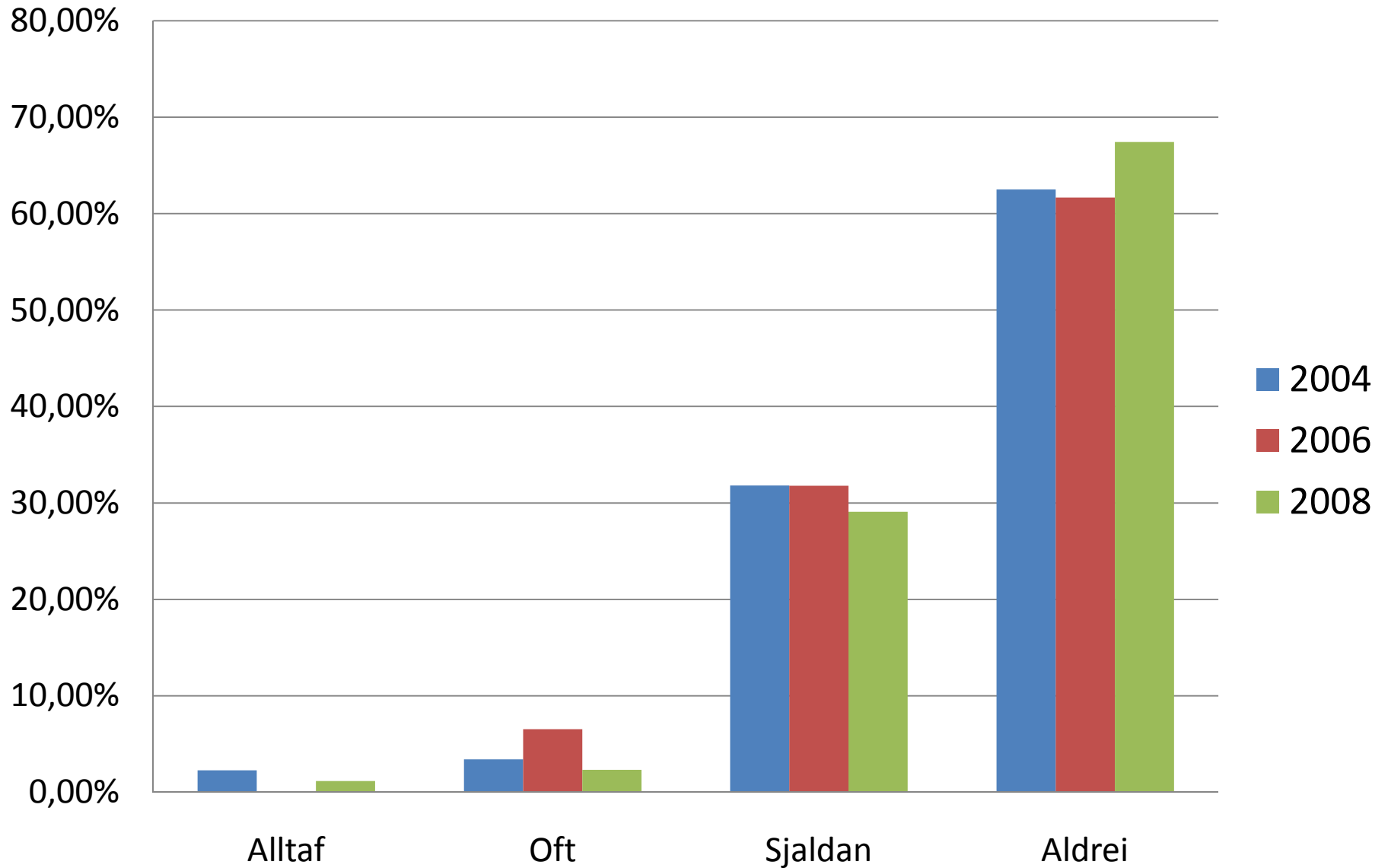


Hvolsskóli er góður skóli 7. - 10. b.



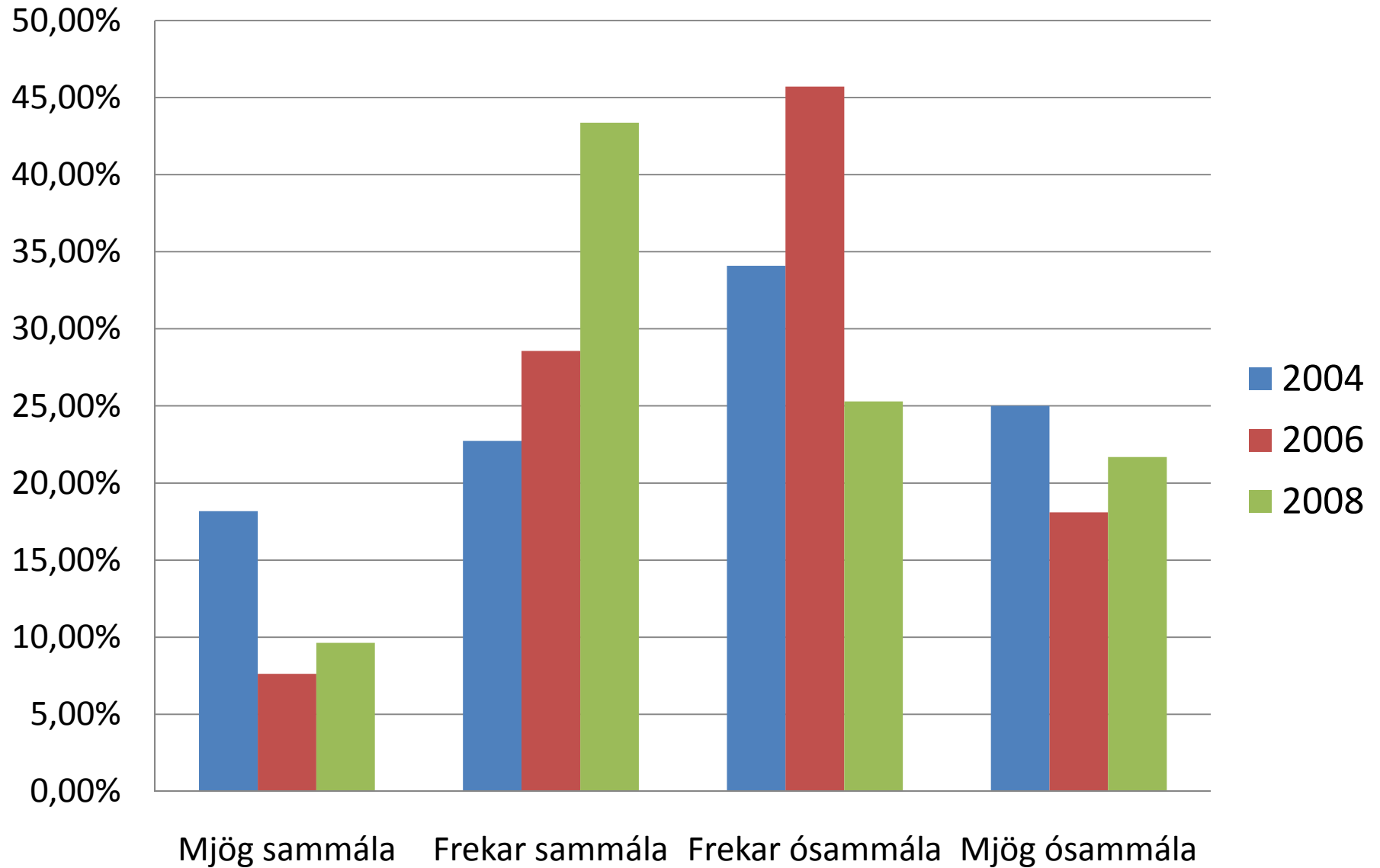
Ég kvíði fyrir því að fara í skólann

7. – 10. bekkur



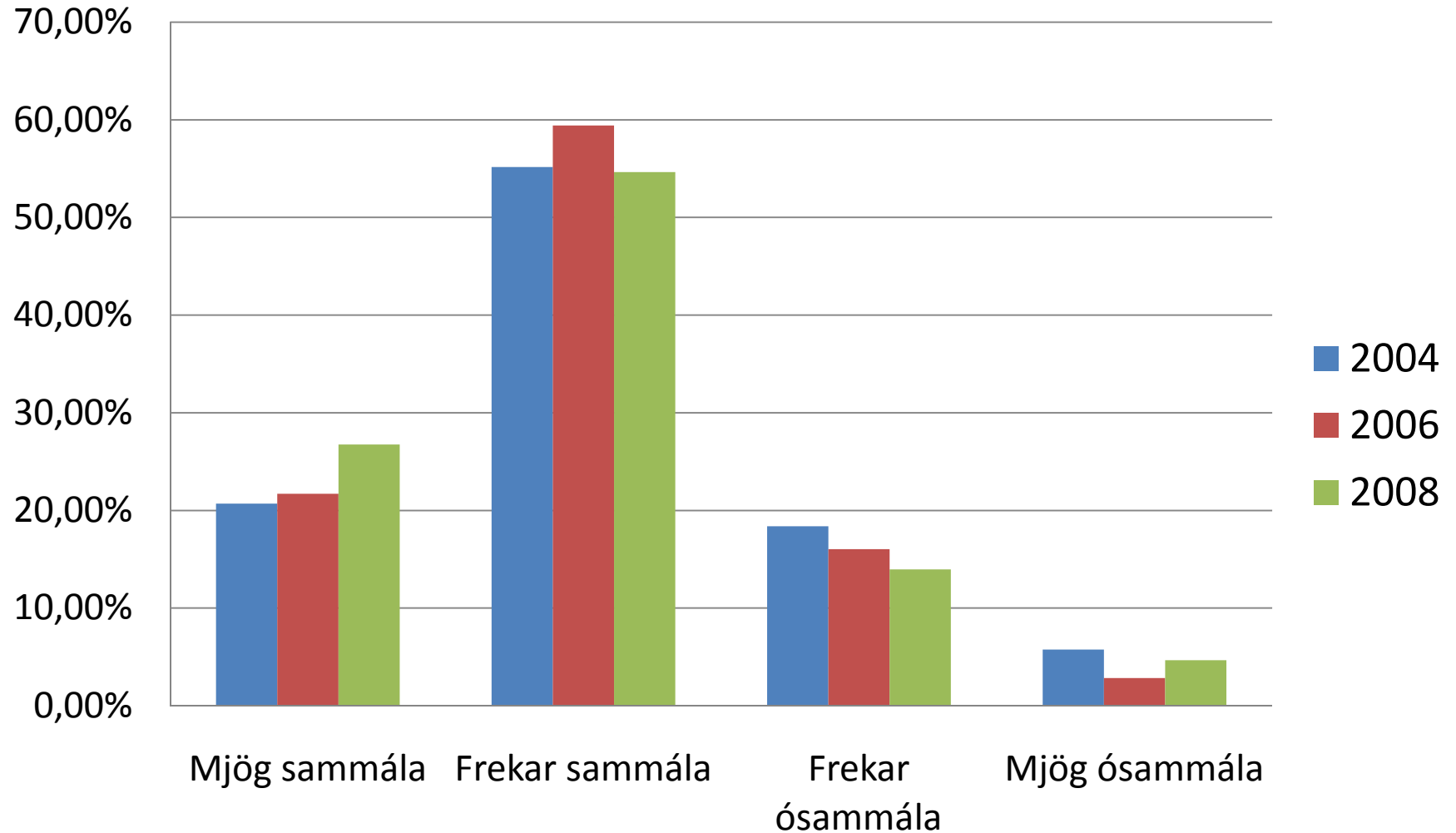
Ég er haldinn námsleiða

7. – 10. b



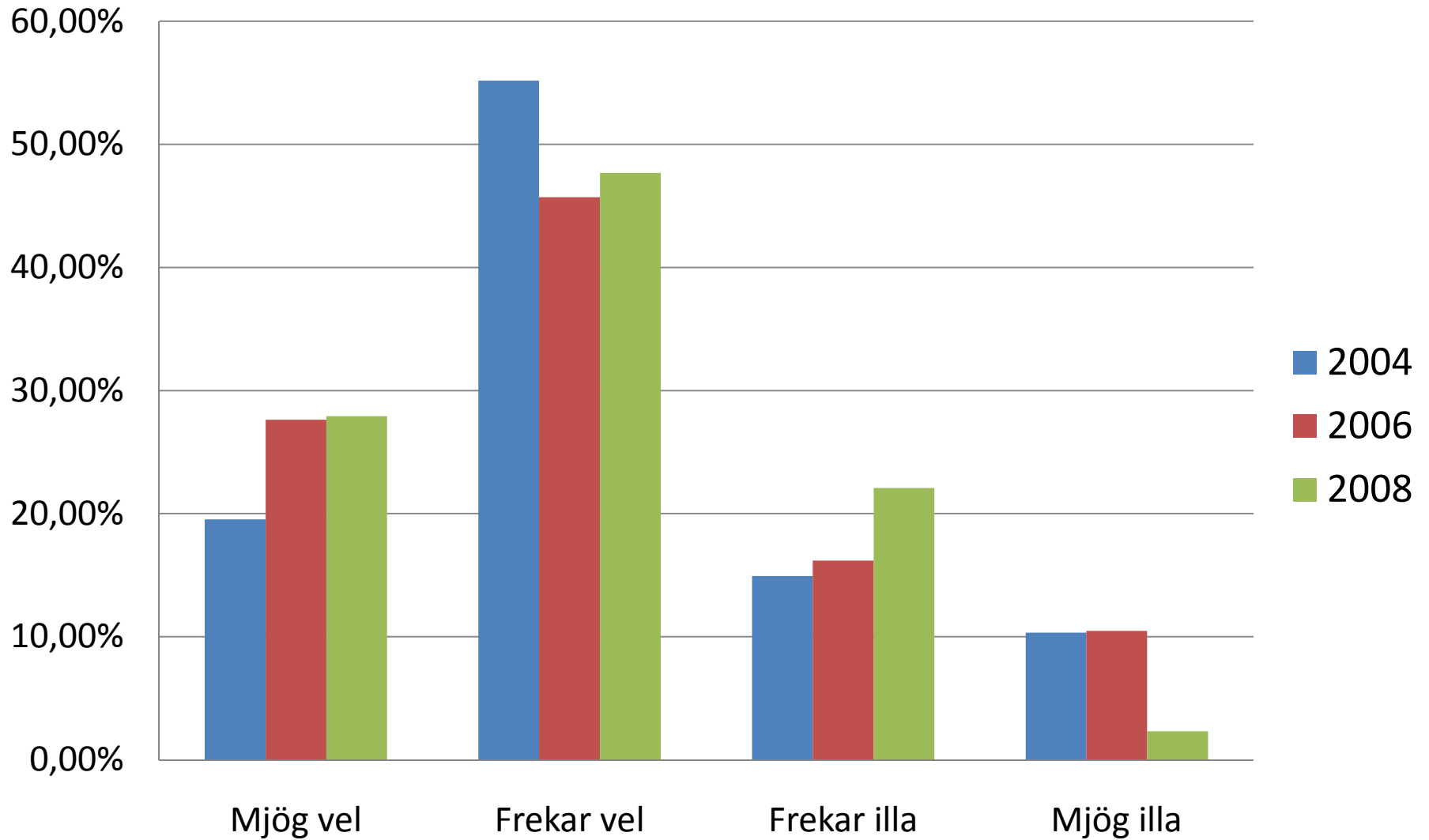
Ég tel að það sé góður starfsandi/liðsandi meðal nemenda í skólanum

7. – 10. bekkur



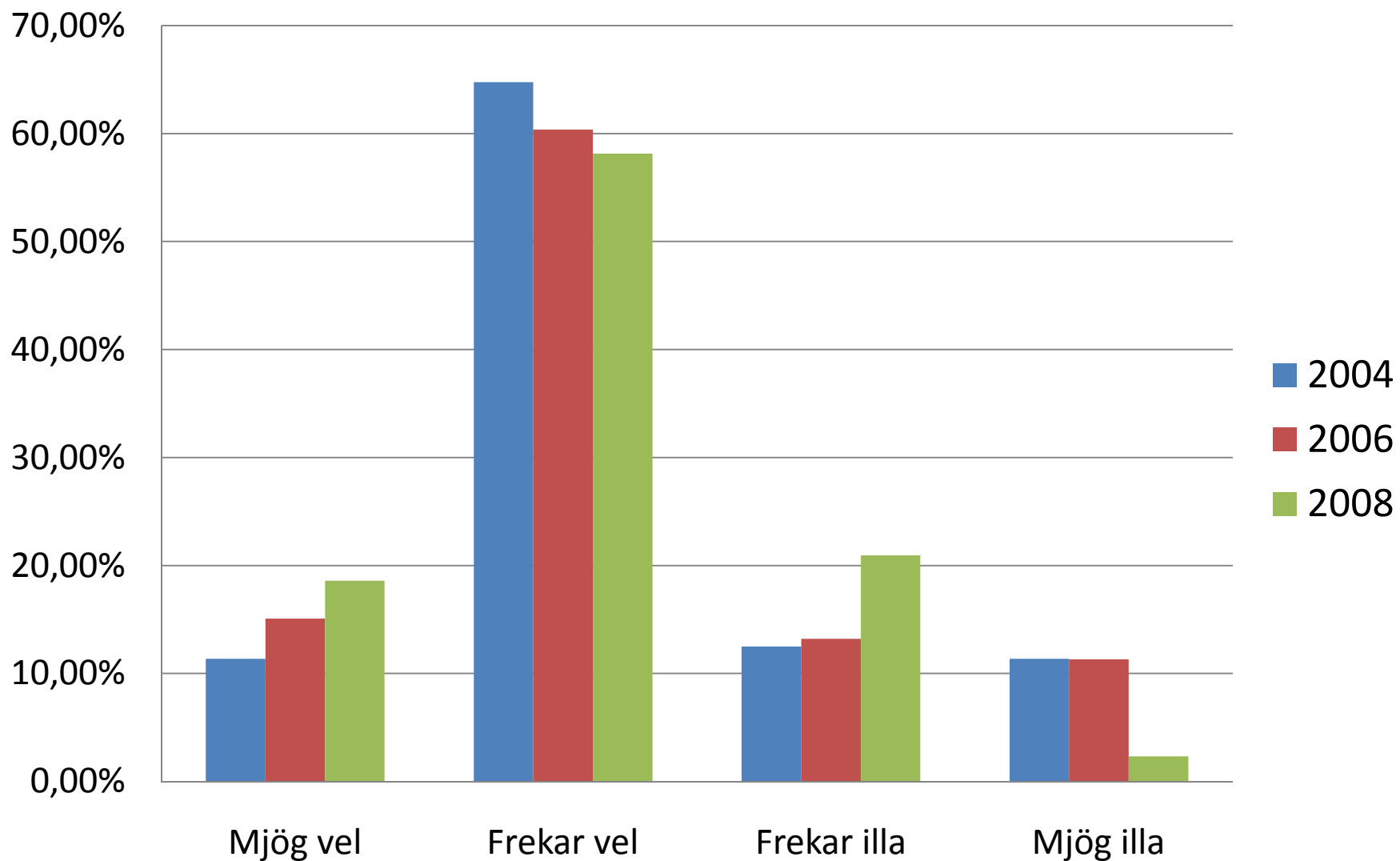
Kennslan sem ég fæ hentar mér

7. – 10. b



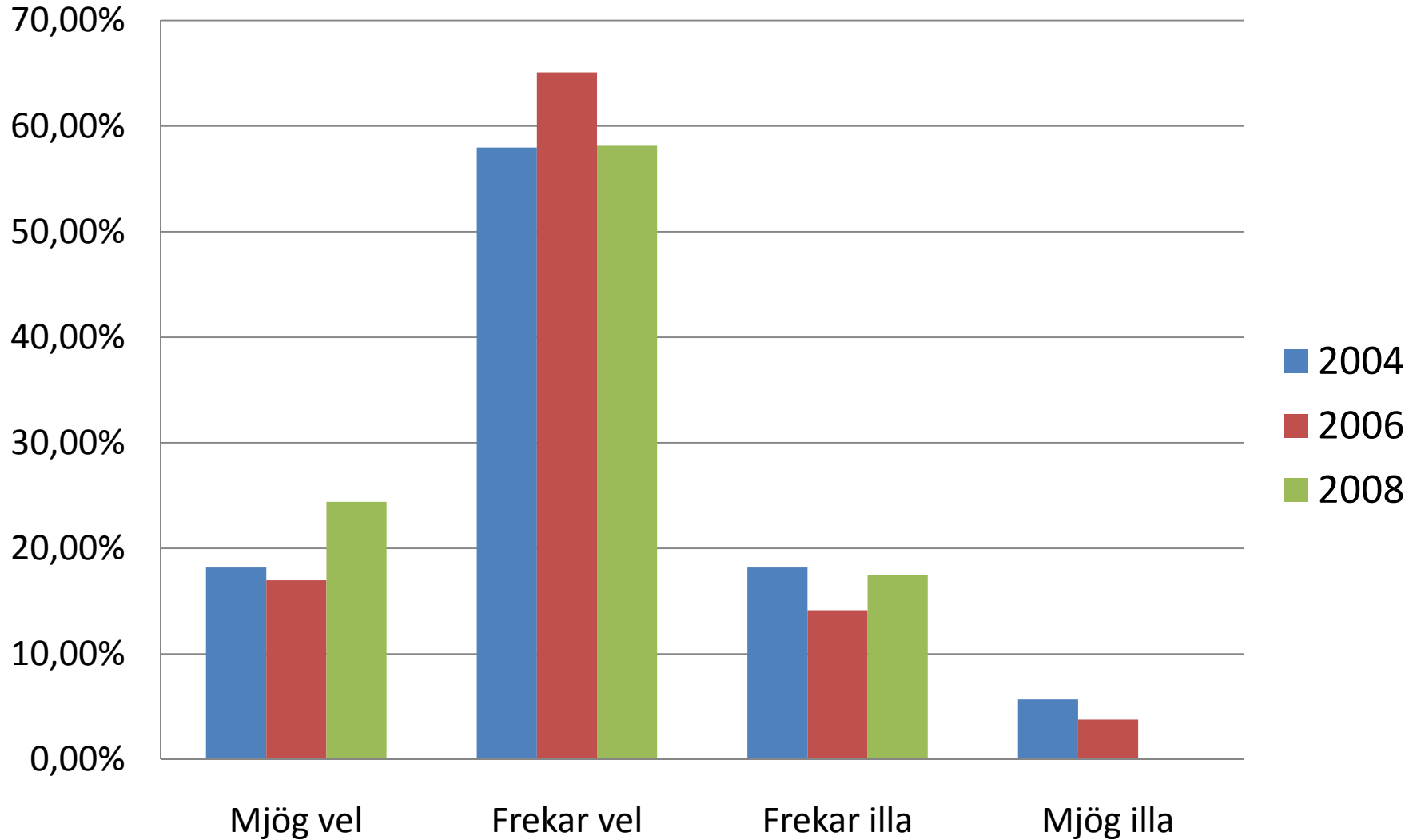
Hvernig finnst þér kennslustundir nýtast þér?

7. – 10. bekkur



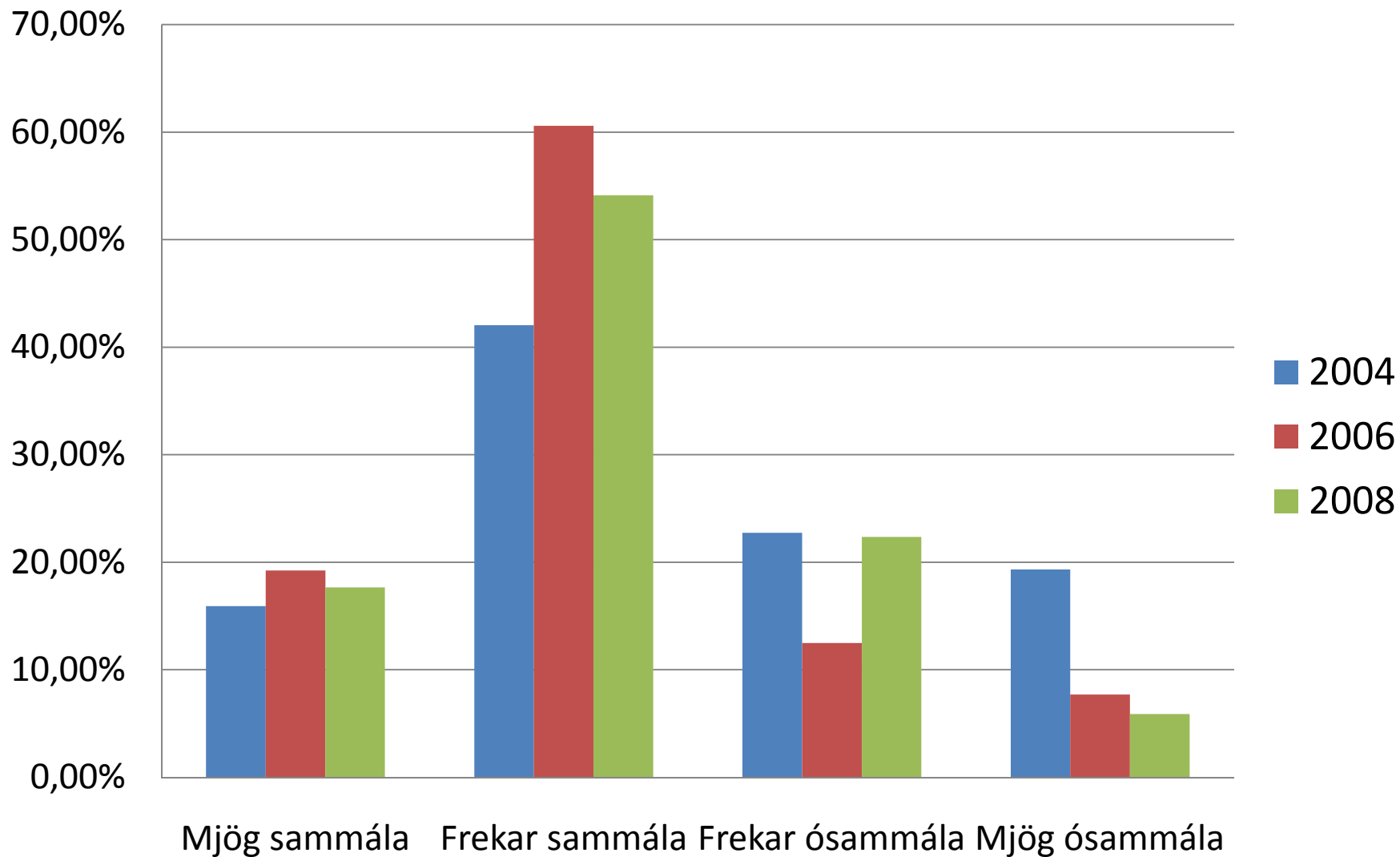
Hvernig hefur þér gengið í náminu að eigin mati í vetur?

7. – 10. bekkur

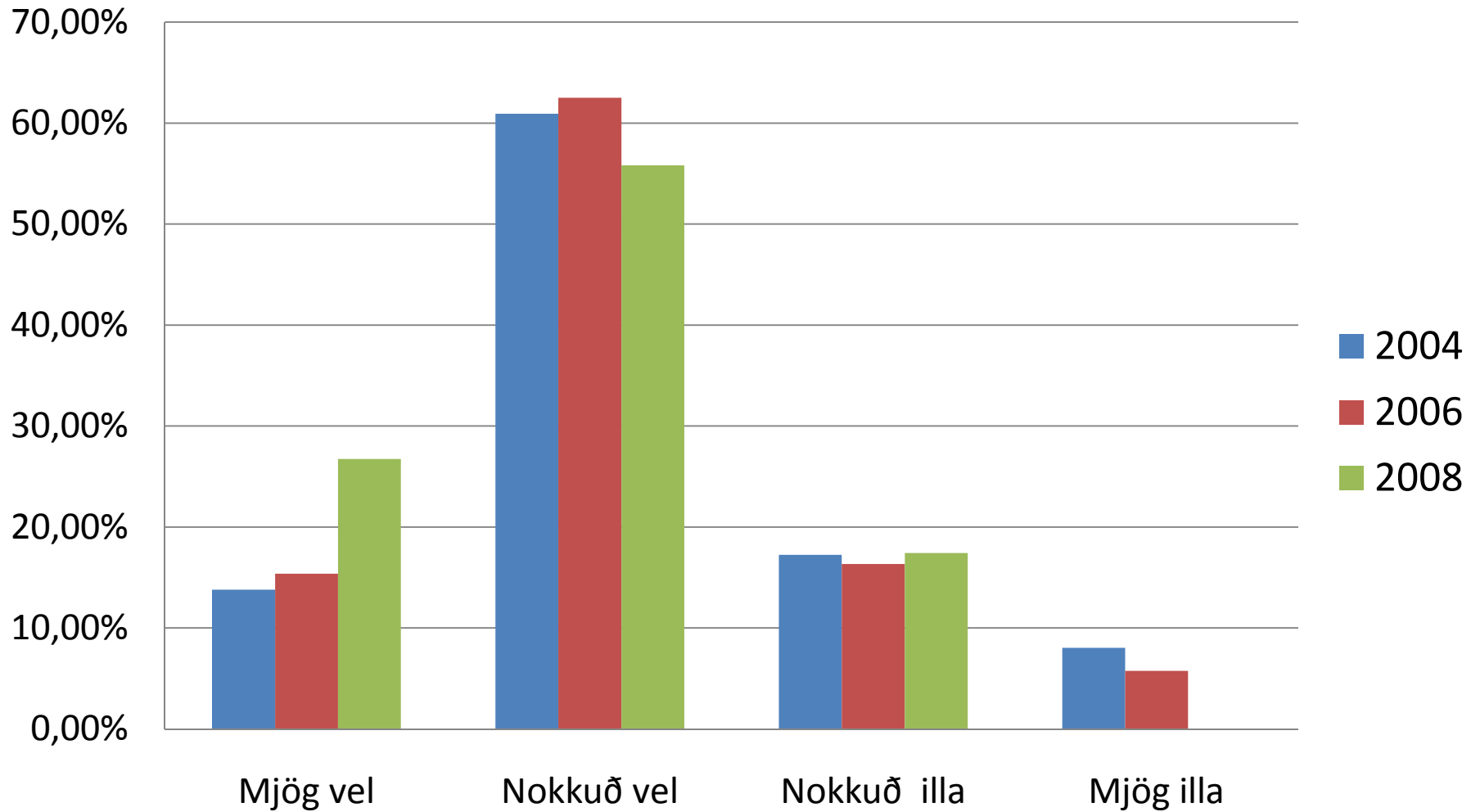


Kennarar Hvolsskóla miða kennsluna við getu nemenda/þína

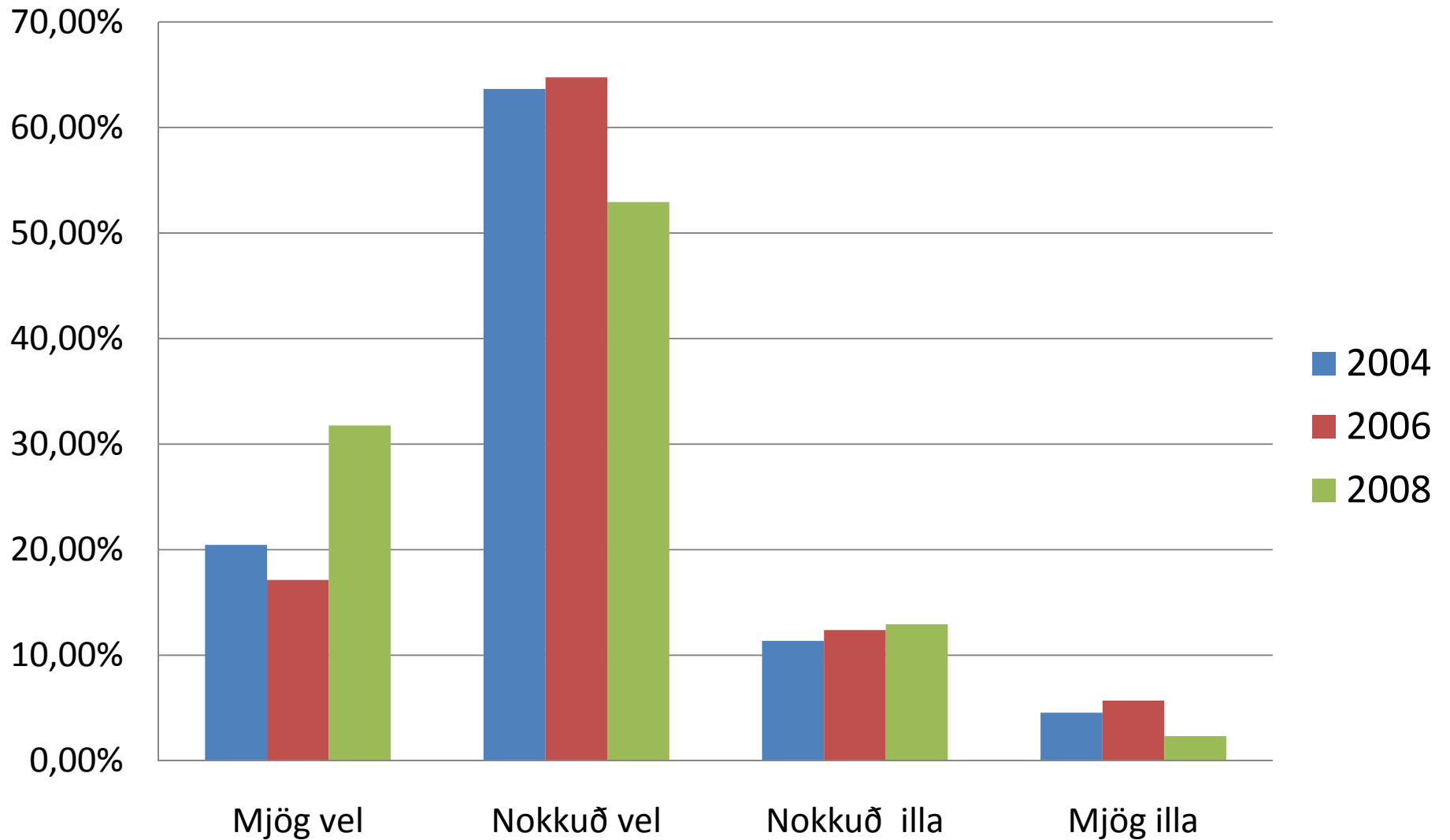
7. - 10. b



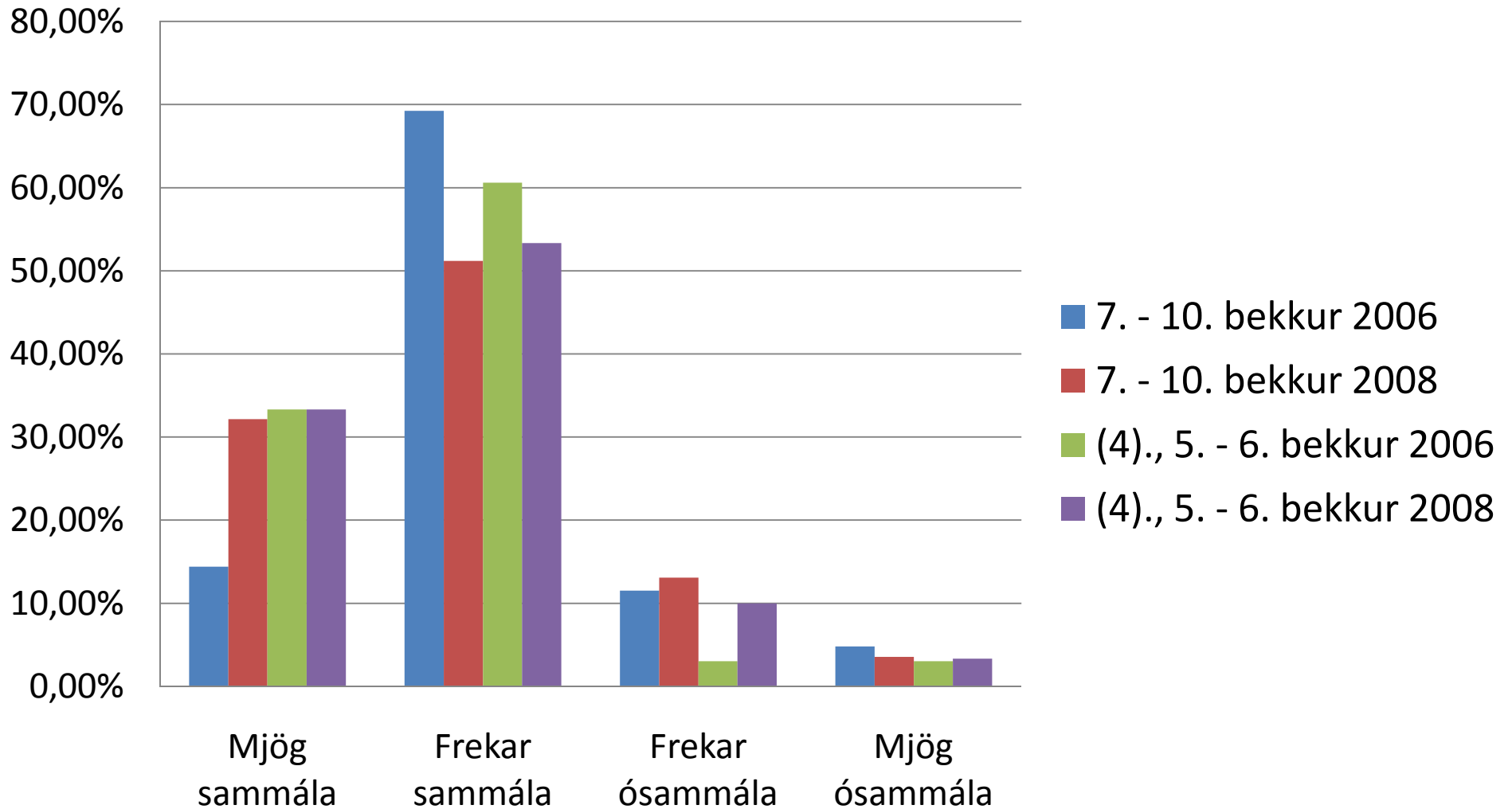
Hvernig telur þú að skólinn búi þig undir atvinnulífið? 7. - 10. b



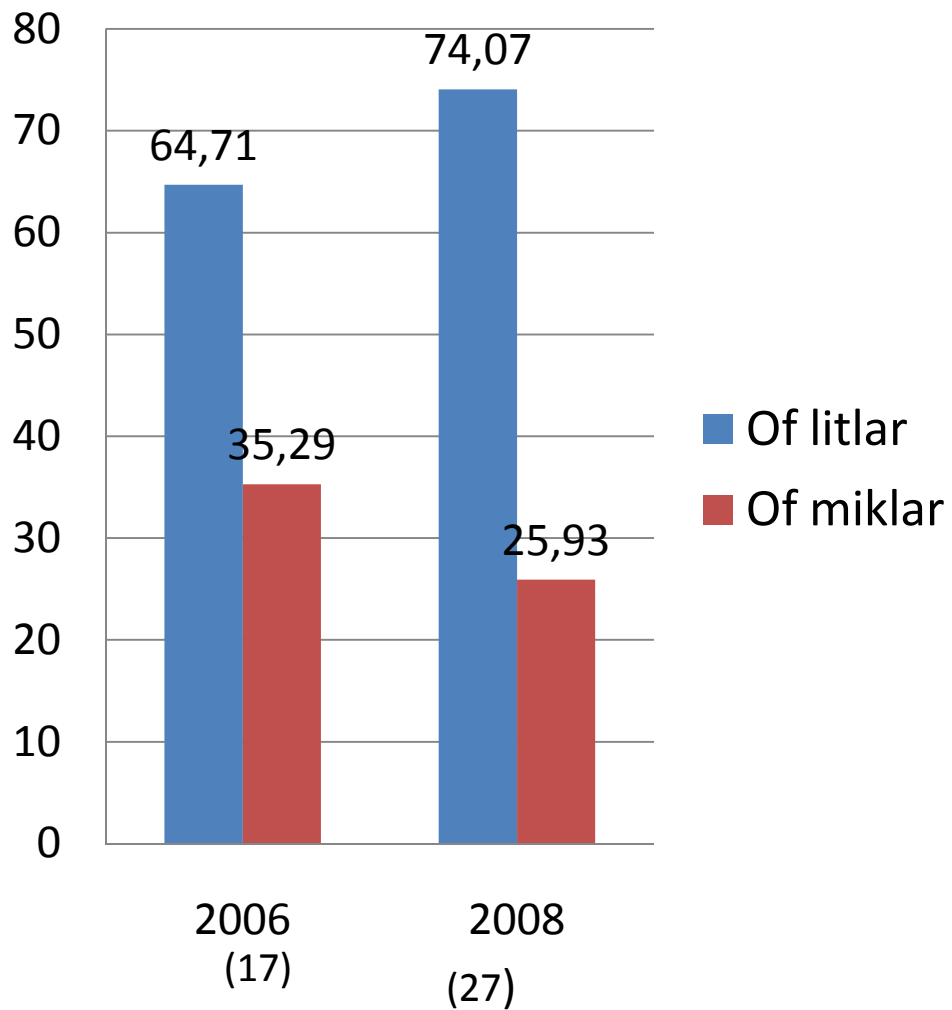
Hvernig telur þú að skólinn búi þig undir framhaldsnám? 7. - 10. b



Skólinn gerir raunhæfar/réttlátar kröfur til mín í námi, 4. - 10. bekkur



Miðstig - Kröfur gerðar til nemenda



Elsta stig - kröfur gerðar til nemenda

